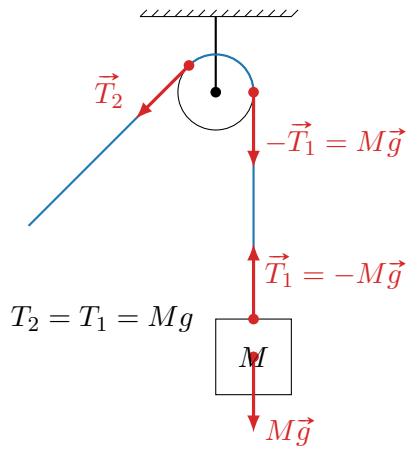
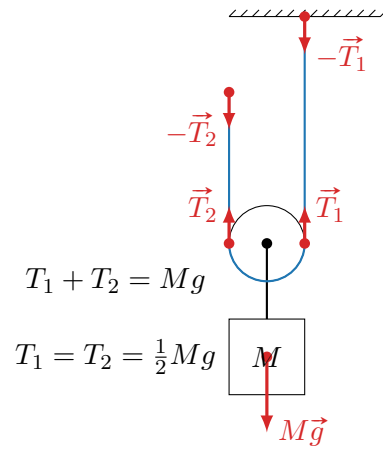


Figure 1 – Modélisation des actions mécaniques, exemple du skieur sur un tire-fesses.

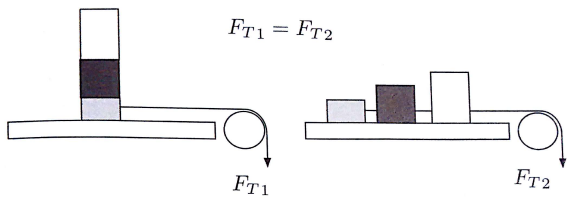


(a) Poulie simple fixe, rapport 1.

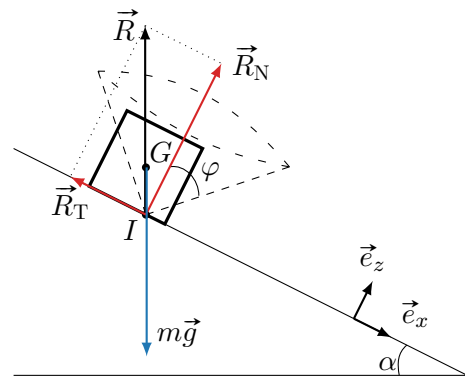


(b) Poulie simple mobile, rapport 2.

Figure 2 – Principe d'une poulie.



(a) L'expérience de Léonard de Vinci.



(b) Plan incliné, situation de non-glissement.

Figure 3 – Frottements solides.